

# *SuperPlane™ 4*

RECESSED

[alwusa.com/sp4r](http://alwusa.com/sp4r)



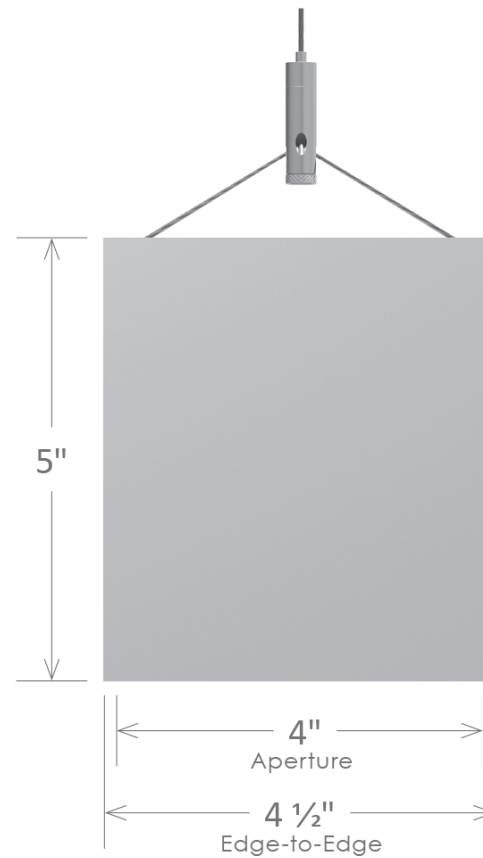
*SuperPlane™*  
with ControlRoll™ Optics

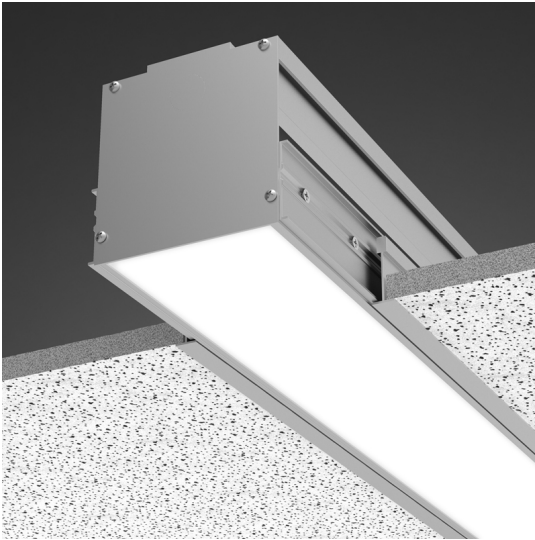
 **ALW™**

## SuperPlane™ 2.5



## SuperPlane™ 4

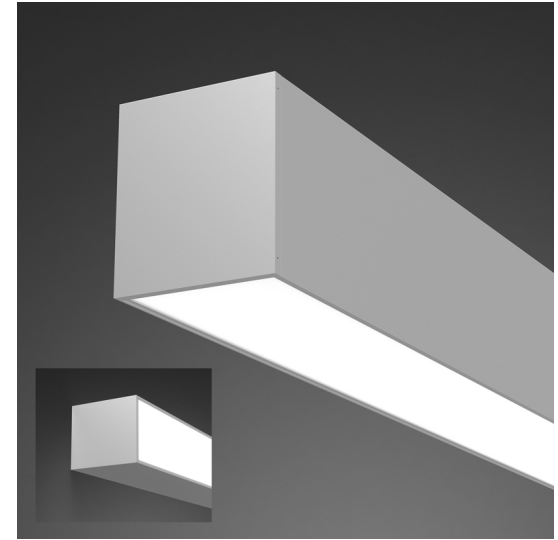




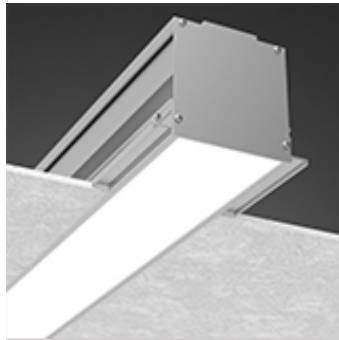
Recessed



Suspended

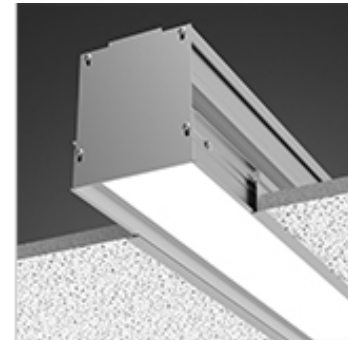


Surface



**SuperPlane™ 4**  
RECESSED

FLUSH • REGRESSED • PERIMETER  
T-GRID • SLOT • TECHZONE  
DRYWALL • WOOD • METAL

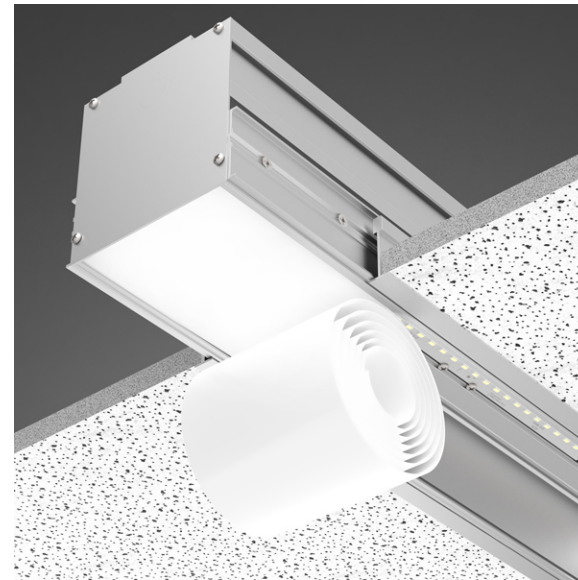


Available Now

Delivers Seamless Illumination

up to **250** Feet

## **ControlRoll™ Optics**



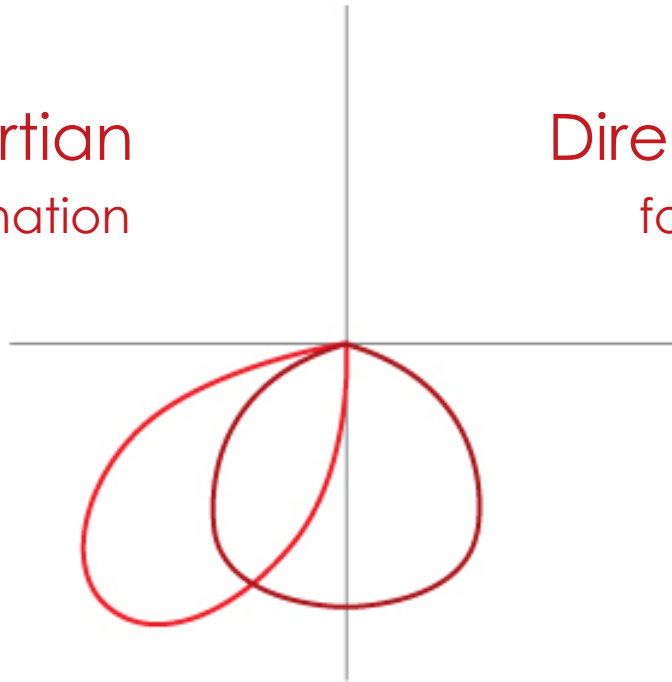
### **Continuous Roll-Out/Snap-In Lens**

Eliminates lens gaps, light leaks and shadows in long runs

## **ControlRoll™ Optics**

Direct Lambertian  
for Ambient Illumination

Direct Asymmetric  
for Wall Washing



Delivers Energy-Saving Performance

up to **110** lm/W



DLC Listings Coming in 2<sup>nd</sup> Quarter, 2018



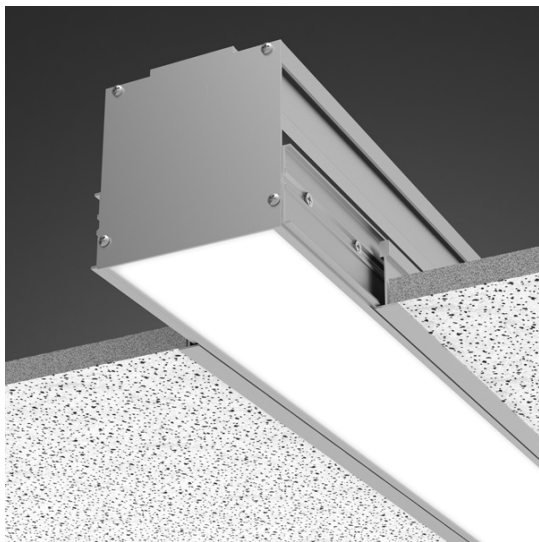
Delivers Glare-Free, Visual Comfort

UGR rating of **10** in typical use

Well Building Standard  
Lighting Design-Enabled  
with 90+ CRI option and R9>50

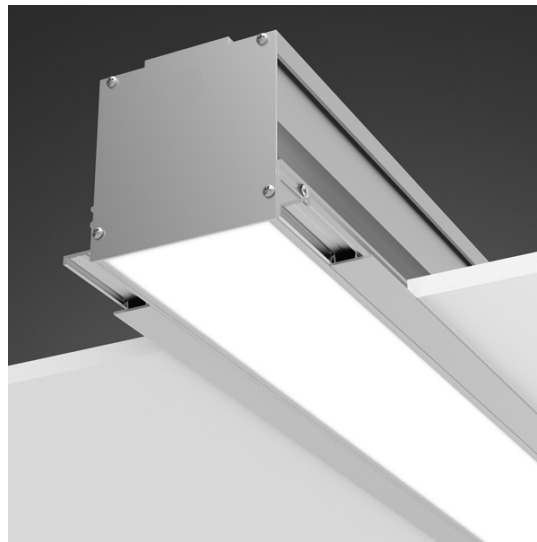
Circadian  
Lighting Design-Enabled  
with Tunable White LED lamping

## Installs into All Types of Ceilings...



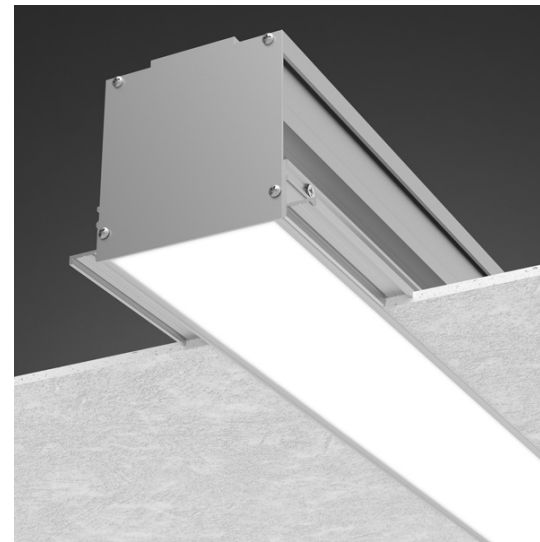
### T-Grid / Slot

5/16" & 9/16:  
Standard & Techzone



### Trim

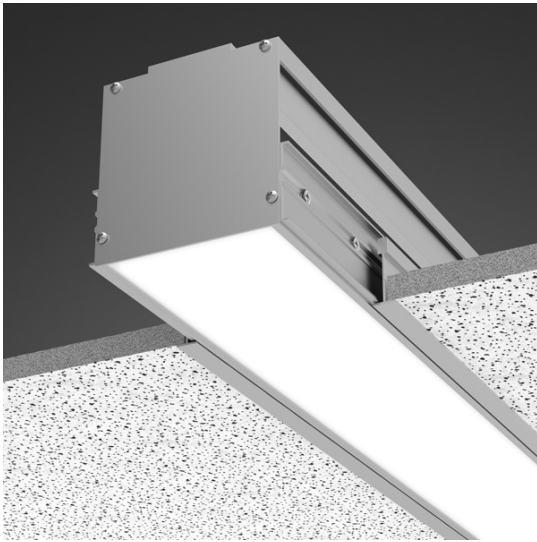
Wood, Metal or Drywall



### Trimless

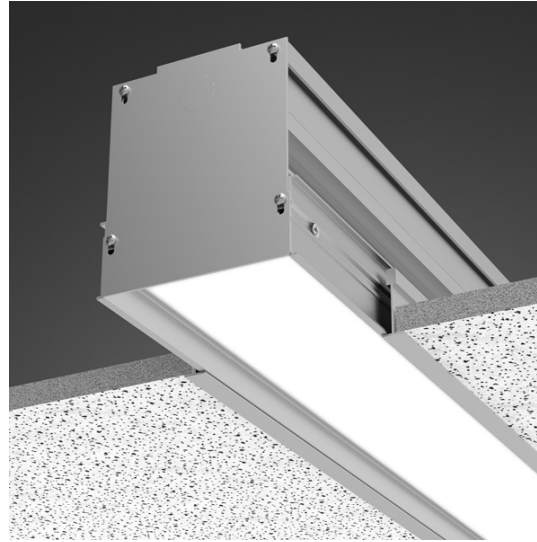
Drywall Mud-In  
or Wood & Metal

## In Multiple Ways...



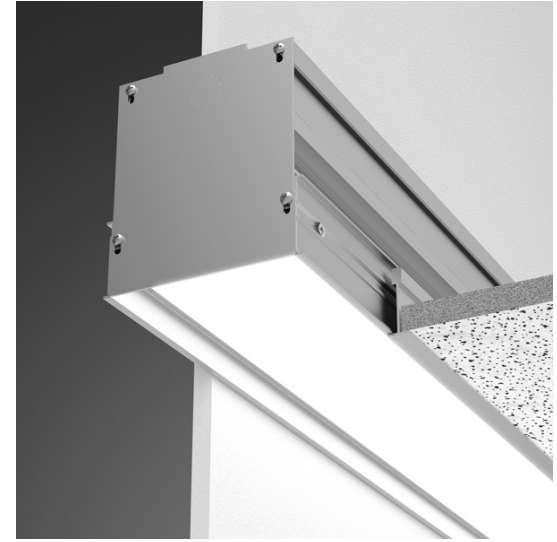
### Flush

Lens Even with  
Ceiling Plane



### Regressed

Lens Regressed  $\frac{3}{4}$ "  
into Ceiling Plane



### Perimeter

Flush or Regressed

# CompleteSuite™ Color

## LED Lamping Options

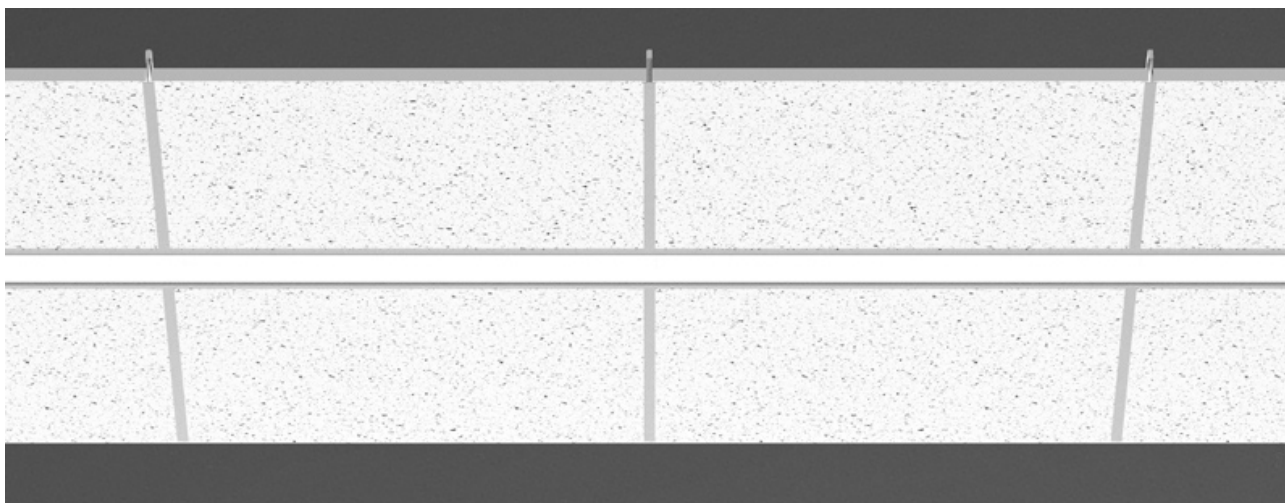


3000K, 3500K, 4000K  
80+ or 90+ CRI

Tunable White  
2700K-5700K

Color-Changing  
RGB or RGB+White

## Expansive Lamping Options



**MIN**

300  
Delivered  
lm/ft

**LOW**

500  
Delivered  
lm/ft

**MED**

700  
Delivered  
lm/ft

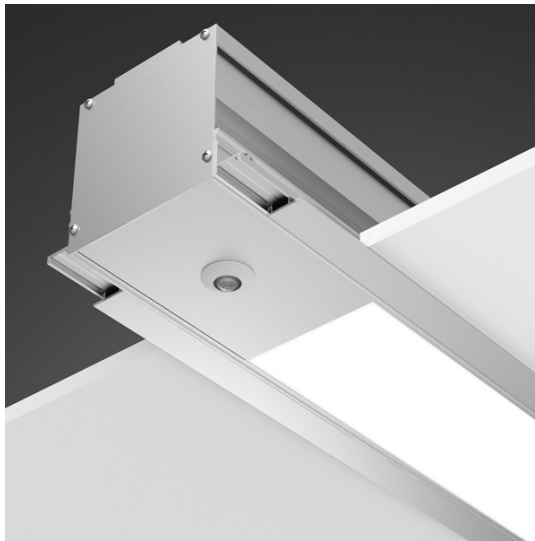
**HI**

900  
Delivered  
lm/ft

**MAX**

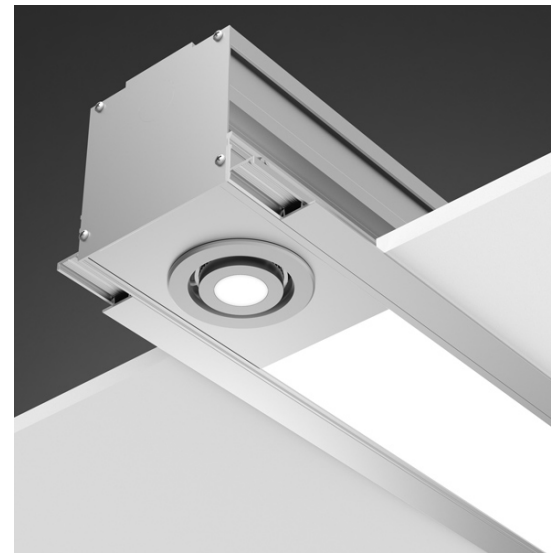
1200  
Delivered  
lm/ft

## Integral Add-Ons



### Sensors

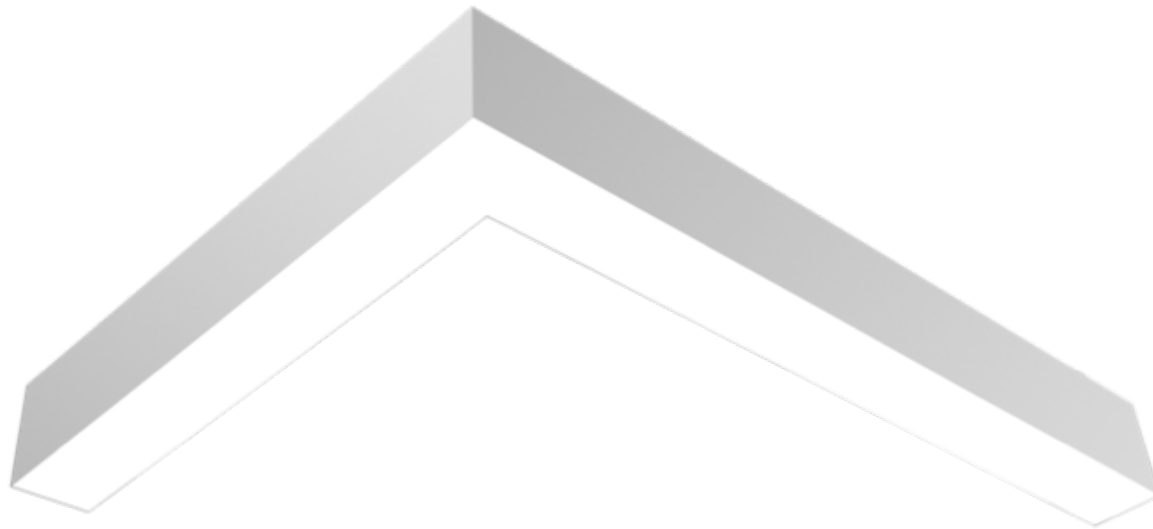
Photoelectric, Occupancy or  
Multi-Function Enlighted Smart Sensors



### Downlights

Aimable, Accent Downlights with  
Outputs up to 1500 lumens per Unit

## Configurations with Mitered Corners



Create configured shapes and patterns by joining luminaires at interior angles of 60° to 180°.

## 10 Day or Less QuickShip-Eligible

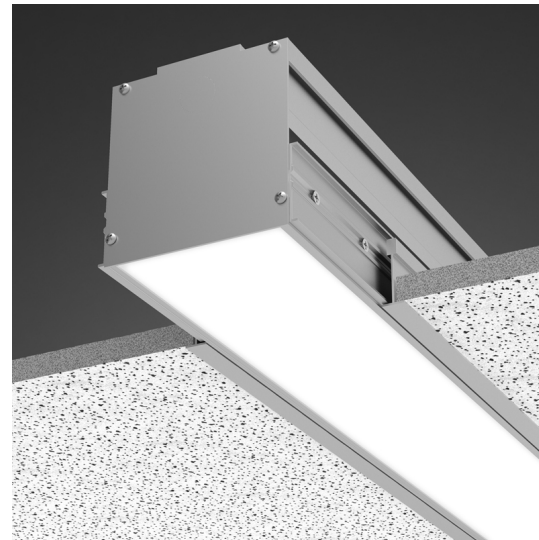
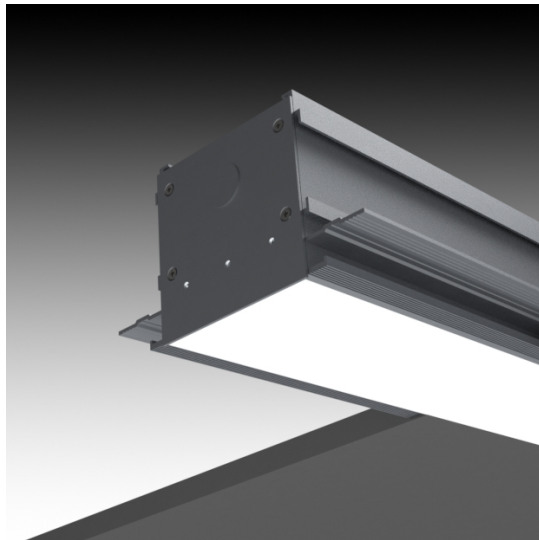


All mounting types, all MIN-MAX outputs, all CCTs, 5% and 1% dimming, integral sensors, emergency options, plus 90° mitered-corner configurations qualify.



# The Next Generation of Lightplane

## Reinvented from the Inside Out



# Advancements

SuperPlane 4 Recessed vs. Lightplane 3.5 & 5 Recessed

## Seamless Illumination

250 ft. vs. 8 ft.

## Greater Efficacy

110 lm/W vs. 98 lm/W  
at 700 delivered lumens

## Improved Dimming

5% vs. 10%  
Standard

## 90+ CRI Option

Yes vs. No

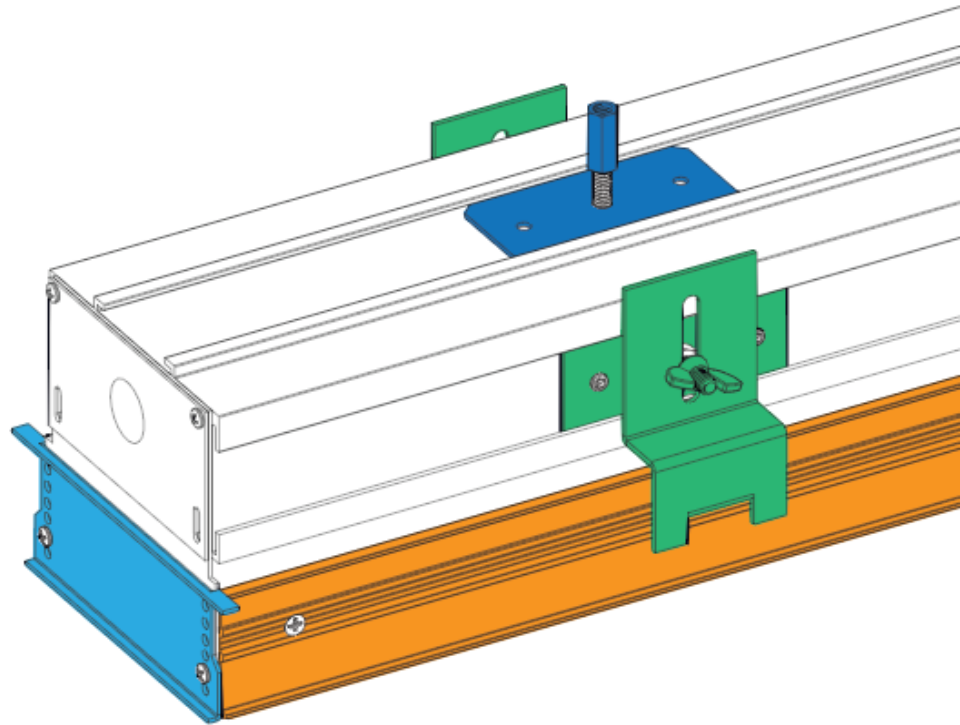
# Advancements

## SuperPlane 4 Recessed vs. Lightplane 3.5 & 5 Recessed

### One Body All Mounting Types

Single body design is augmented with specific mounting attachments to accommodate installation into multiple types of ceilings.

This approach helps keep costs low and facilitates in-field installation changes if necessary.

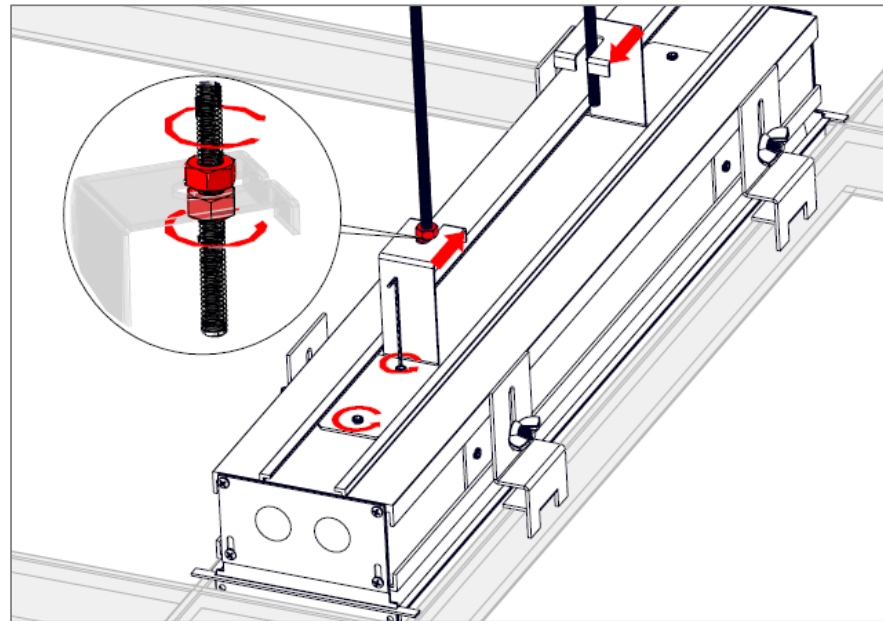


# Advancements

SuperPlane 4 Recessed vs. Lightplane 3.5 & 5 Recessed

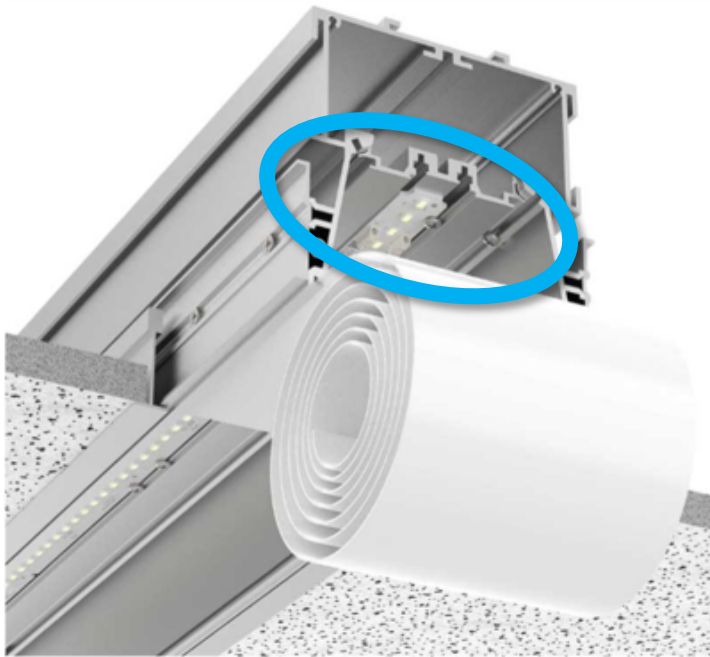
## Ease of Installation

SuperPlane T-grid models mount easily with 1/4-20 rod couplers. No need to disassemble fixture for mounting as in Lightplane.



# Advancements

SuperPlane 4 Recessed vs. Lightplane 3.5 & 5 Recessed



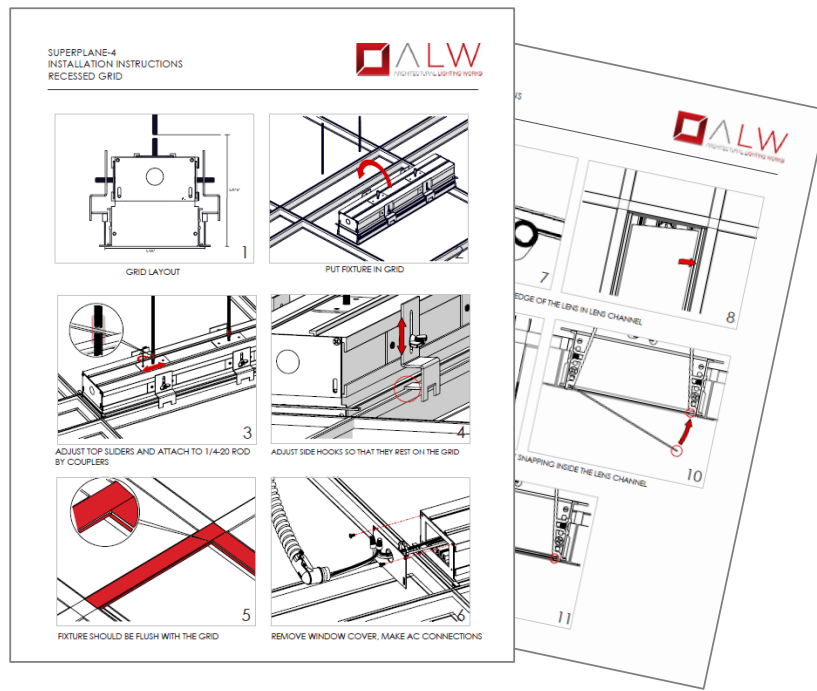
## Ease of Maintenance

The LED light engine (board, driver and heatsink) is a single unit that can easily be accessed and replaced for maintenance and/or upgrades.

Simply remove lens, unscrew the unit, disconnect wires and replace components as necessary.

# Advancements

SuperPlane 4 Recessed vs. Lightplane 3.5 & 5 Recessed



## Improved Install Guides

Clearer, better organized installation instructions with detailed drawings of every step help contractor easily and correctly do installations in less time.

## Competitive Overview

MFR	Product Name	Continuous Lens	Lumens per Foot	Efficacy LM/W	DLC 4.0	Patterns	All Mount Options	Asymmetric Lens	Downlight	Chicago Plenum
ALW	SuperPlane SP4R	Yes up to 250'	1200	Up to 110	Yes Coming Soon	Yes	Yes	Yes Coming Soon	Yes Coming Soon	Yes Coming Soon
Focal Point	Seem 4-LP FSM4L	No	1000	77-127	Yes	Yes	Yes	No	No	No
Lumen Werx	Via 4 VIA4RF	No	1200	118-126	Yes	No	Yes	No	Yes	Yes
Axis Lighting	BEAM 3 LED BR3LED	Yes up to 48'	900	97	No	No	No No Mud-In	No	No	Yes